



## 8-Port Gigabit+2-Port Gigabit SFP Unmanaged Industrial Ethernet Switch

FR-IS1010GF-E

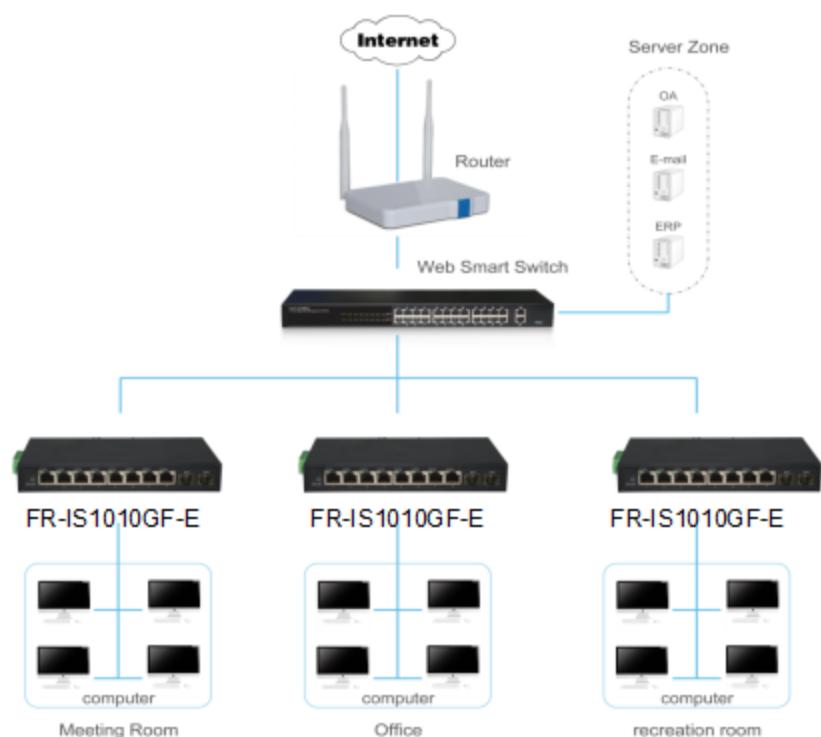
### Features

- Wire-speed forwarding, intelligent recognition
- Dual DC12~48V wide range power redundancy inputs
- Working temperature range of -40~75 °C
- IP40 protection grade
- Port surge protection up to 6KV
- Power off alarm(1 way relay output, current load capacity 1A @ 24VDC)
- DIN rail installation

### Description

FR-IS1010GF-E is 8 ports 10/100/1000Mbps + 2 ports 100/1000Mbps SFP Unmanaged Industrial Ethernet Switch. It provide simple and understood LED indicator light on the front panel, so that you can quickly judge the working state of the switch, and help to diagnose the network failure. This product is designed for harsh industrial environment, Supports dual DC12~48V wide range power redundancy inputs, IP40 protection grade metal chassis design; DIN rail installation; port surge protection up to 6KV; the working temperature range of -40~75 °C, can meet the special needs of industrial automation control.

### application



### Features

- Comply with IEEE 802.3i, IEEE802.3z, IEEE 802.3u, IEEE802.3x, IEEE802.3ab standards
- 8 x 10/100/1000Mbps Auto MDI/MDI-X Ethernet port
- Two 100/1000Mbps SFP Slots
- Supports IEEE802.3x flow control for Full-duplex mode and backpressure for Half-duplex mode
- 4K MAC address table of the switch with auto-learning and auto-aging
- LED indicators for monitoring PoE, Link / Activity
- Dual DC12~48V wide range power redundancy inputs
- Power off alarm(1 way relay output, current load capacity 1A @ 24VDC)
- Metal chassis design supports IP40 protection grade and DIN rail installation
- Port surge protection up to 6KV

### Specification

Model	FR-IS1010GF-E	
Chipset	VSC7512+VSC8514	
Standards and Protocols	IEEE 802.3i、IEEE 802.3u、IEEE 802.3ab、IEEE 802.3x、IEEE 802.3z	
Interface	8 x 10/100/1000Mbps Auto-Negotiation ports 2x 100/1000Mbps SFP ports	
Network Media	10BASE-T: UTP category 3, 4, 5 cable (maximum 100m) 100BASE-Tx: UTP category 5, 5e cable (maximum 100m) 1000Base-T: UTP category 5e, 6 cable (maximum 100m) 1000Base-SX: 62.5µm/50µm MMF(2m~550m) 1000Base-LX: 62.5µm/50µm MMF(2m~550m)Or 10µm SMF (2m~5000m)	
Transfer Method	Store-and-Forward	
MAC Address Table	4K	
Switching Capacity	20Gbps	
Packet Forwarding Rate	14.88Mpps	
Packet Buffer	1.75Mbits	
Jumbo Frame	9600Bytes	
LED indicators	Per Device	Power(Green)
	Per Port	Link/Activity(Green)
Power Supply	Dual DC12~48V inputs	
Power Consumption	Maximum: 7.44W (DC 12V)	
Dimensions ( W x D x H )	L190*W100*H28 mm	
Environment	Operating Temperature: -40°C - 75°C Storage Temperature: -40°C - 85°C Operating Humidity: 5%~95% RH non-condensing Storage humidity: 5%~95% RH non-condensing	