

48-Port Gigabit + 4-Port Gigabit SFP L2 Managed Switch

FR-S3052GFM-C



Characteristic

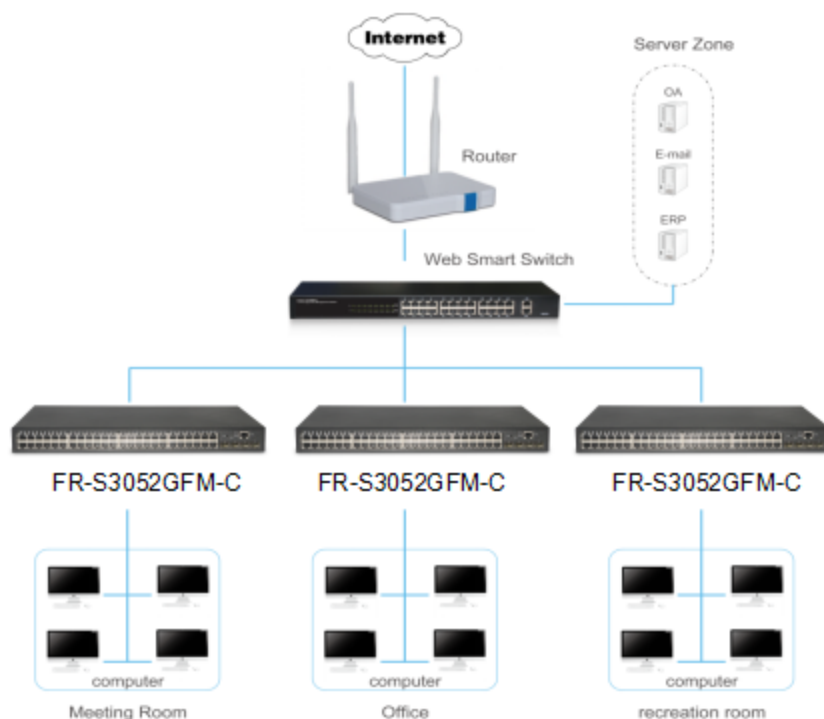
- 48 x 10/100/1000Mbps Auto MDI/MDI-X Ethernet port
- Four SFP Slots
- Switching Capacity up to 104G
- Store and forward mode operates
- Support Web-based Management

Description

FR-S3052GFM-C is 48 ports 10/100/1000Mbps +4 SFP ports Ethernet Switch. The switch provides the seamless network connection. This device integrates 1000Mbps Gigabit Ethernet, 100Mbps Fast Ethernet and 10Mbps Ethernet network capabilities in a highly flexible package. With 48-10/100/1000Mbps Auto-Negotiation RJ45 ports, all UTP ports support Auto MDI/MDIX function. The Switch with a low-cost, easy-to-use, high performance upgrade your old network to a 1000Mbps Gigabit network. It is essential to helping solve network bottlenecks that frequently develop as more advanced computer user and newer applications continue to demand greater network resources.

The switch is easy to install and use. It requires no configuration and installation. It is a great selection for office network.

The application of topology



L2

QoS

48-Port Gigabit + 4-Port Gigabit SFP L2 Managed Switch

FR-S3052GFM-C

Features

- Comply with IEEE802.3i, IEEE802.3u, IEEE802.3ab, IEEE802.3x, IEEE802.3z, IEEE802.3ad standards
- Supports IEEE802.3x flow control for Full-duplex Mode and backpressure for Half-duplex Mode
- Supports MAC address auto-learning and auto-aging
- Store and forward mode operates
- Support SNMP/RMON/TELENET
- Supports IEEE802.1Q VLAN,4K VLAN Table
- Support IEEE802.1p Priority Queues
- Support 2K+256-entry ingress and egress ACL
- Support Storm Control
- Support QoS、Port Mirroring、Link Aggregation Protocol
- Support manual reset function
- LED indicators for monitoring power, link/activity、Speed
- Web-based Management Support
- Internal power adapter supply

Specification

Model Name	FR-S3052GFM-C	
Chipset	RTL8393M+6*RTL8218B+RTL8214FC+3*RTL8231	
Standards and Protocols	IEEE802.3i、IEEE802.3u、IEEE802.3ab、IEEE802.3z、IEEE802.3x、IEEE802.3ad、IEEE802.1Q、IEEE802.1P	
Interface	48*10/100/1000Mbps Auto-Negotiation RJ45 Ports 4*1000Mbps SFP 1*RJ45 Console Port	
Network Media	10BASE-T: UTP category 3, 4, 5 cable (maximum 100m) 100BASE-TX/1000BASE-T: UTP category 5, 5e or above cable (maximum 100m) 1000BASE-X:MMF,SMF	
Transfer Method	Store-and-Forward	
MAC Address Table	16K	
Switching Capacity	104Gbps	
Packet Forwarding Rate	77.38Mpps	
Packet Buffer	12Mbit	
Jumbo Frame	9KBytes	
indicators	Per Device	Power
	Per Port	Link/Activity/Speed
Power Supply	100-240VAC ,50/60Hz	
Power Consumption	Maximum AC Power consumption : 35.9W(220V/50Hz)	
Dimensions (W x D x H)	440*330*44mm	
Environment	Operating Temperature: 0°C ~ 40°C Storage Temperature: -40°C ~70°C Operating Humidity: 10%~90% non-condensing Storage humidity: 5%~90% non-condensing	