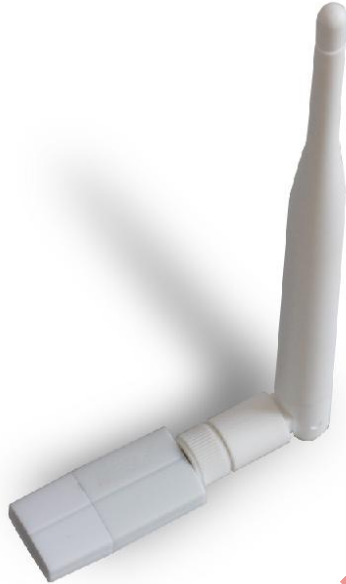




## 300M Wireless USB Adapter



FR-WL140NU-D

### Description

The FR-WL140NU-D is a 300M Wireless USB Adapter, fully complies with 802.11b/g/n specifications, adopting 2T2R architecture, up to 300 Mbps data rate, you can connect a desktop or notebook computer to a wireless network and access high-speed Internet connection which is beneficial for the such as HD video streaming and online gaming applications.

### Features

- Complies with 802.11n specifications
- Backward compatible with 802.11b/g wireless networks
- Up to 300Mbps raw data transfer rate
- Support WPA and WPA2 to safeguard wireless network access security
- USB 2.0 interface
- Supports Windows2000/XP/Vista/7, Linux, Mac

### Specification



Model	FR-WL140NU-D
Chipset	RTL8192EU
Standards and Protocols	IEEE 802.11n, IEEE 802.11g, IEEE 802.11b
Interface Type	USB 2.0 Standard, USB1.1 Compliant
Frequency Band	2.4 ~ 2.4835GHz
Transmission Rate	11b: 1/2/5.5/11Mbps
	11g: 6/9/12/18/24/36/48/54Mbps
	11n: Up to 300Mbps Maximum
Modulation Technology	DBPSK, DQPSK, CCK, OFDM, 16-QAM, 64-QAM
Security	WPA2/WPA-PSK(AES, TKIP) WEP64, 128BIT
RF Power	20dBm (max)
Sensitivity @PER	11n HT40: -65dBm@10% PER
	11n HT20: -69dBm@10% PER
	11g: -72dBm@10% PER
	11b: -80dBm@8% PER
LED Status	Link/Activity
Dimensions (L x W x H)	230*20*8mm
Environment	Operating Temperature: 0°C~40°C
	Storage Temperature: -20°C~70°C
	Operating Humidity: 10%~90% non-condensing
	Storage Humidity: 5%~95% non-condensing